

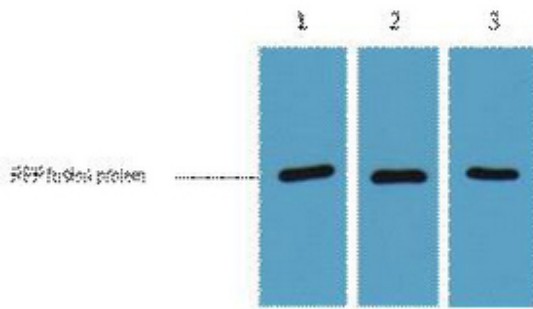


# RFP-Tag Monoclonal Antibody(5G4)

<b>Catalog No</b>	YP-Ab-04733
<b>Isotype</b>	IgG
<b>Reactivity</b>	Species independent
<b>Applications</b>	WB;IF;
<b>Gene Name</b>	
<b>Protein Name</b>	
<b>Immunogen</b>	Recombinant Protein of RFP-Tag
<b>Specificity</b>	The antibody detects RFP ERFP tag fusion proteins. It isn't reactive against GFP CFP YFP. It is reactive against morange tag weakly.
<b>Formulation</b>	PBS, pH 7.4, containing 0.5%BSA, 0.02% sodium azide as Preservative and 50% Glycerol.
<b>Source</b>	Monoclonal, Mouse
<b>Purification</b>	The antibody was affinity-purified from mouse ascites by affinity-chromatography using specific immunogen.
<b>Dilution</b>	WB: 1:10000-20000,IF 1:200-2000
<b>Concentration</b>	1 mg/ml
<b>Purity</b>	≥90%
<b>Storage Stability</b>	-20°C/1 year
<b>Synonyms</b>	
<b>Observed Band</b>	
<b>Cell Pathway</b>	
<b>Tissue Specificity</b>	
<b>Function</b>	
<b>Background</b>	RFP (Red Fluorescent Protein), cloned from Discosoma coral (DsRed, DsRed2 or drFP583), is a protein which exhibits bright red fluorescence when exposed to blue light. It is common research practice for biologists to introduce a gene (or a gene chimera) encoding an engineered fluorescent protein into living cells and subsequently visualize the location and dynamics of the gene product using fluorescence microscopy.
<b>matters needing attention</b>	Avoid repeated freezing and thawing!
<b>Usage suggestions</b>	This product can be used in immunological reaction related experiments. For more information, please consult technical personnel.



## Products Images



1ug RFP fusion protein+ Primary antibody dilution at  
1) 1:3000 2) 1:5000 3) 1:10000